

 **Receive Updates**

Enter Email Address

GO

March 2nd Issue of News You Can Use



March 2, 2020 - Volume 1, Number 3

nursing.iowa.gov



News & Updates

Novel Coronavirus News Headlines

The Iowa Department of Public Health (IDPH) continues to track the Coronavirus topic and has issued a number of announcements over the last several weeks. The Iowa Board of Nursing encourages nurses, healthcare agencies and the public to bookmark and follow the news at this IDPH webpage: <https://idph.iowa.gov/Emerging-Health-Issues/Novel-Coronavirus>

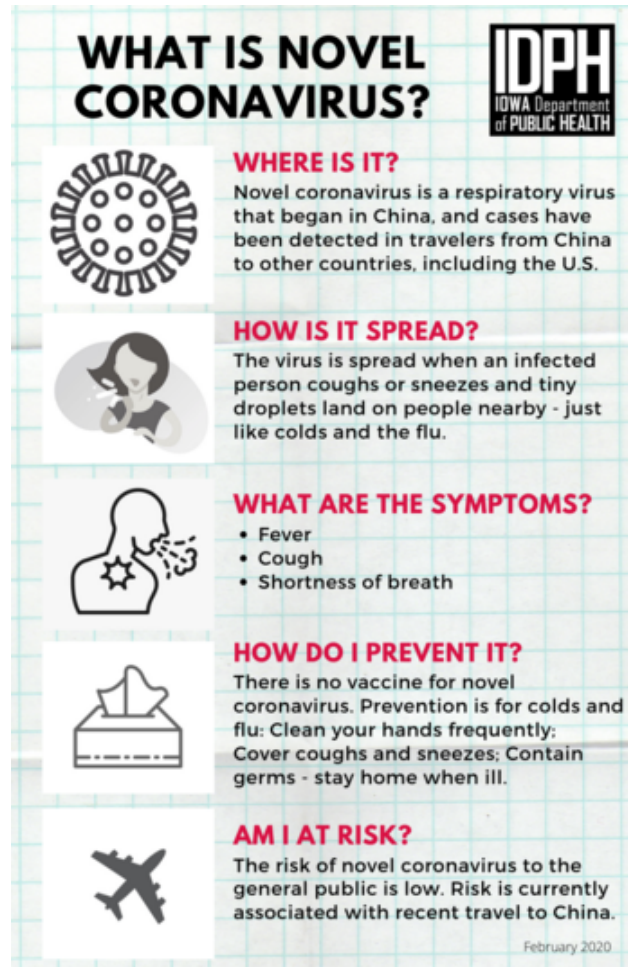
Interesting News

Click on the heading links below for more information.

[Upcoming Events](#)

Upcoming Board events may be found on the Board's website. For details and times, click above.

Scroll through the page to see travel precautions, general prevention tips and other resources by categories. The poster below is a great visual to assist with describing the virus.



Nursing Demand Survey

[Nurse Corps Loan Repayment Program](#)

application period is open through March 12, 2020. Check the information to see if you qualify to apply.

[Board Orders](#)

For a listing of licensees who have been disciplined by the IBON in the last year, see the link in the heading. The list is updated approximately every quarter. Follow the online instructions to see the details of each case.

[Iowa PMP User - Live Training Session](#)

Mark your calendars to attend the live Iowa PMP User training session on Tuesday, March 17th at 4:30PM. The training will be held at the Iowa Board of Pharmacy offices, located at 400 S.W. Eighth St, Suite E in Des Moines, IA. The training will also be available via Zoom. Topics covered will be PMP user registration, log-in trouble shooting and delegate registration and management. The training session is scheduled to last approximately 45 minutes and you will have the opportunity to ask

The 2020 Nurse Employer Survey has been distributed to human resource professionals at Iowa's hospitals, long term care facilities and ambulatory care centers to collect the most accurate and current data available about the number and types of nurses employed in Iowa and to determine Iowa's nursing workforce demand. The Iowa Center for Nursing Workforce under the Iowa Board of Nursing, and with the assistance of Iowa Workforce Development, are working together to develop projections for the number and types of nurses needed in our state.

These data from the survey will help answer some of the pressing questions asked by healthcare workforce professionals, elected officials and leaders in nursing education and practice. Results will assist with workforce planning strategies and provide evidence for decisions impacting the future of nursing in Iowa.

Nurses should encourage their employers to respond to the survey. We need everyone's help to effectively plan for Iowa's future nursing workforce. Questions about the survey should be directed to Laura Hudson at laura.hudson@iowa.gov.

More information about the Iowa Center for Nursing Workforce may be found at this [LINK](#)



Nurse Licensure Compact Moving Scenarios

The Board of Nursing staff often receives questions dealing with the Nurse Licensure Compact and particularly questions about moving scenarios. In the information from the Nurse Licensure Compact administrators, you can see the requirements of moving from noncompact to a compact state; from compact to noncompact state; and from a compact to compact state. Additionally, the document describes what international nurses can expect when applying for licensure.

The definition of a primary state of residence (PSOR) is most important to know:

The state (also known as the home state) in which a nurse declares a primary residence for legal purposes. Sources used to

questions related to the covered topics. A second training session will be held at a later date covering Prescriber Activity Reports, MyRx and other PMP tools such as the communications module and NarxCare®.

Please RSVP to PMP@iowa.gov if you are planning on attending the training session on site at the Board of Pharmacy.

[License Verification Steps](#)

Reminder: As of 7/1/2019, the Iowa Board of Nursing no longer provides wallet cards when issuing licenses. Nurses and nursing employers can access the most recent information about a nurse licensee by accessing the Board's IBON Online Services site. A nurse's license number must be entered to view the information. See the following link to access the information: [License Verification](#)

Subscribe to News

Receive [News You Can Use](#) in your inbox.

verify a nurse's primary residence may include driver's license, federal income tax return or voter registration.

PSOR refers to legal residency status and does not pertain to home or property ownership. Only one state can be identified as the primary state of legal residence for NLC purposes.

Click on the document for more information: [Moving Scenarios](#)

For more information about the Nurse Licensure Compact, see their website at: <https://www.ncsbn.org/nurse-licensure-compact.htm>

See the full website at nursing.iowa.gov

News You Can Use is the official means of communication from the IBON to Iowa nurses!

Nursing Newsletter archives may be found at this [LINK](#)



POWERED BY



[Privacy Policy](#) | [Cookie Statement](#) | [Help](#)